

County of Rensselaer- 2025



# Group Benefit Offering

A health plan that puts **you first**



# Your partner in good health

As a health plan that puts its members first, CDPHP® provides a personalized experience to support your physical and mental well-being, so you can live your **healthiest life**.



### Family Health

- \$0 primary care physician visits and Tier 1 medications for members under age 19\*
- Up to \$1,500 doula reimbursement
- Fertility, pregnancy, and parenting tools



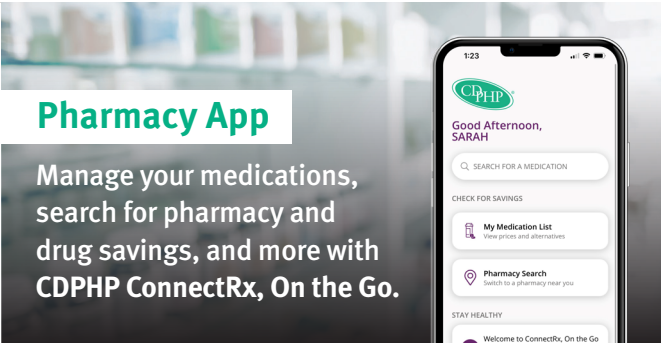
### Fitness and Weight Management Reimbursement

Earn up to \$600 per year for going to the gym, youth sports fees, parent and baby classes, fitness classes, or wearable fitness devices; and up to \$100 for completing a weight loss program.



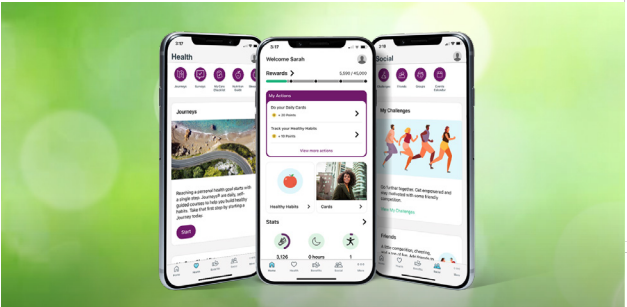
### Mental Health Support

In-person counseling, virtual support, a crisis hotline, and more.



### Pharmacy App

Manage your medications, search for pharmacy and drug savings, and more with CDPHP ConnectRx, On the Go.



### CDPHP Health Hub

Access digital wellness resources 24/7 from your smartphone or computer. Complete healthy activities and earn points that turn into CDPHP Life Points® Rewards and can be redeemed for gift cards.\*\*



### Virtual Doctor Visits

Live video doctor visits 24/7 for physical and mental health.

\* Subject to \$0 cost sharing. For primary care physician visits, deductible will apply on HSA qualified high deductible plans for non-preventive care visits. \$0 Tier 1 medications applies for preferred pharmacy locations. Deductible applies on HSA qualified high deductible plans.

\*\* Adults age 18 and older in select plans are eligible. CDPHP Life Points Rewards accumulate per calendar year, per contract. Rewards must be redeemed by December 31 each year or prior to contract termination. Please check your member contract or call the number on your ID card to see if you're eligible.

Benefits vary by plan.



# Finding Care

## When You Have a CDPHP® HMO Plan

CDPHP HMO plans provide access to network providers in the counties below. When you're out of the area, you can get care 24/7 from your smartphone or tablet through live video doctor visits with Doctor On Demand. Members on CDPHP HMO plans are covered worldwide for emergencies.

Find CDPHP HMO network providers by visiting [findadoc.cdphp.com](http://findadoc.cdphp.com).





# Out-of-Area Coverage

Wherever you may travel, as a CDPHP member, you're covered for urgent and emergency care – worldwide!

## Live Video Doctor Visits through Doctor On Demand®

Connect with a board-certified physician 365 days a year, 24 hours a day – all from your smartphone, computer, or tablet. As a convenient alternative to urgent care, you can receive treatment for mental health and medical services, including lab tests and prescriptions, no matter where you are.

A Doctor On Demand visit is now \$0\* (unlike urgent care which has a charge).

Download the Doctor On Demand app or visit [doctorondemand.com/cdphp/join](http://doctorondemand.com/cdphp/join) to learn more.



### Emergency health situation?

Dial **911** or go to the nearest hospital emergency room.



### Urgent, but not an emergency? *Example: Sore throat, sprain, or infection*

Contact CDPHP at **1-800-274-2332** – day or night – **before** seeking care.



### Out of country with an emergency?

Seek care immediately and pay for it yourself. Ask for an itemized bill, then submit the bill to CDPHP when you're back in the U.S.



### Routine care?

Stick with receiving care from your primary care physician (PCP). Standard visits are generally not covered when you're traveling out of the area.

\* Subject to deductible on high deductible plans. Cost may vary by plan type.

#### Discrimination is Against the Law

Capital District Physicians' Health Plan, Inc., CDPHP Universal Benefits, Inc., and Capital District Physicians' Healthcare Network, Inc. (collectively referred to as CDPHP®) comply with applicable federal civil rights laws and do not discriminate on the basis of race, color, national origin, age, disability, or sex.

#### Multi-language Interpreter Services


ATENCIÓN: Si habla otro idioma que no es el inglés, tiene a su disposición servicios gratuitos de asistencia lingüística. Llame al número que figura en su tarjeta de identificación de miembro (TTY: 711).

注意：如果您使用的語言不是英語，您可以免費獲得語言援助服務。請致電您會員ID卡上的電話（聽力障礙電傳：711）。

# Where to go for care

## NEED AN APPOINTMENT?

In a non-emergency situation, it's important to start with your primary care doctor. Your physician knows your health status best and can treat many health issues.

When choosing a new primary care doctor, consider one who participates in the CDPHP Enhanced Primary Care program. These doctors are known for providing better, more cost-effective care. Look for the Enhanced Primary Care icon when searching on Find-A-Doc. 

## YOUR DOCTOR ISN'T AVAILABLE?

You have access to live video doctor visits 24/7 through your mobile device or computer. Learn more about virtual options for physical health at [cdphp.com/doctorondemand](https://cdphp.com/doctorondemand) and view your virtual options for mental health and substance use at [cdphp.com/mentalhealth](https://cdphp.com/mentalhealth).

## MORE URGENT NEED?

If your doctor isn't available, visit an urgent care location before going to the ER. Urgent care has short wait times and is more economical. In fact, **visits to the ER are generally not covered for non-emergency services.**

Many specialists also offer walk-in and urgent care services that would save you time and money compared to a visit to the ER.

Confused by health care terminology? **Check out our glossary!**  
[cdphp.com/understanding-health-insurance](https://cdphp.com/understanding-health-insurance)



# Ongoing support

## Member Services

Do you have a question about your benefits and coverage? We're here to help. Call us at the number on the front of your ID card.

## CDPHP Care Team

Have a health concern? To talk one-on-one with a member of the CDPHP Care Team, including nurses, dietitians, and care coordinators, call [1-888-94-CDPHP \(23747\)](tel:1-888-94-CDPHP).

## Mental Health and Substance Use

For 24/7 support or help finding a provider that meets your needs, call [1-888-320-9584](tel:1-888-320-9584). Learn more at [cdphp.com/mentalhealth](https://cdphp.com/mentalhealth).

## CDPHP Customer Connect<sup>SM</sup>

Meet face to face with a CDPHP representative about claims, benefit questions, enrollment, and more. For hours and more, visit [cdphp.com/customerconnect](https://cdphp.com/customerconnect).

## Family Health

Resources to support you and your family at every stage of life. Learn more at [cdphp.com/familyhealth](https://cdphp.com/familyhealth).

## Tools to Quit Smoking

Quit smoking or vaping with digital, phone-based, group, or one-on-one programs. Visit [cdphp.com/quitsmoking](https://cdphp.com/quitsmoking) for details.

CDPHP is here for  
**you and your family.**



# HMO



## The security of a plan you can trust.

You select your doctor. We do the rest.

Our HMO plan is designed to offer you comprehensive coverage with care delivered by your choice of physicians from our extensive network.

The primary care physician (PCP) you select will handle most of your health care needs and refer you within the CDPHP network for specialty care when necessary. Women may choose both a PCP and an OB/GYN without a referral. For complete information on the CDPHP network, refer to the Directory of Participating Practitioners and Providers, or go to [findadoc.cdphp.com](http://findadoc.cdphp.com).

With our HMO plan:

### No charge for certain preventive care visits:



CHECKUPS



VACCINATIONS



WELL-WOMAN AND  
WELL-BABY CARE



CANCER SCREENINGS

### PLUS:

- ▶ Routine preventive care and medical treatments provided and coordinated by a PCP.
- ▶ No specialist referral paperwork required.
- ▶ Single-source referral phone line ([1-888-94-CDPHP](tel:1-888-94-CDPHP)) directs you to the program that best fits your needs.
- ▶ Travel out of the service area and CDPHP covers you [worldwide for emergency care](#).

Have a question?

Call member services at the number on your ID card any weekday between 8 a.m. and 8 p.m.

You also have access to your benefit information online, any time, by logging in to [www.cdphp.com](http://www.cdphp.com).

# CDPHP<sup>®</sup> HMO Plan Benefit Summary



Plan Code: HA14L25(Pending DFS Approval)  
 Group ID: 10006864  
 Presented For: County of Rensselaer  
 Date Prepared: 10/11/2024  
 Effective Date: 01/01/2025

In-Network

## Cost Sharing Information

Deductible	N/A Single / N/A Family
Out of Pocket Maximum	\$9,200 Single / \$18,400 Family (Embedded)

## Office Visits

PCP	\$25 Copayment
*PCP Cost share waived for members that are under the age of 19	
Specialist	\$25 Copayment

## Telemedicine

Preferred Live Video Doctor Visits (Doctor on Demand, Foodsmart, MovN)	Covered in Full
Other Participating Telemedicine Providers (Valera, aptihealth)	\$25 Copayment
Telehealth services from a CDPHP Network provider (PCP or Specialist)	PCP or Specialist cost share based on provider

## Preventive and Well Care Services\*

Well Baby and Child Care including immunizations	Covered in full
Annual Adult Exam (One exam per plan year regardless if 365 days have passed)	Covered in full
Mammography	Covered in full
Annual Pap Test and Ob/Gyn Exam	Covered in full
Prostate Cancer Screening	Covered in full
Bone Density Tests	Covered in full

\*Cost sharing may apply to diagnostic care

## Hospital Services

Inpatient Hospital (semi-private room, anesthesia, X-Ray, lab tests, etc)	Covered in full
Outpatient Surgery Facility	\$75 Copayment

## Maternity Services\*

Maternity - Routine Prenatal Care and Postnatal Care	Covered in Full*
Maternity - Inpatient Hospital Services	Covered in full
Newborn Nursery	Covered in full

\*(Non-routine services may result in an additional cost share)

## Emergency Care

Worldwide Emergency Room Care (waived if admitted inpatient)	\$100 Copayment
Ambulance	\$100 Copayment

## Urgent Care

When seeking care within CDPHP's Service Area, a participating Urgent Care Center must be used.	\$35 Copayment
---	----------------

## Diagnostic Testing\*

Outpatient Hospital or Office Based Laboratory Services: * Copayment waived if provider is a preferred laboratory.	\$25 Copayment
Outpatient Hospital or Office Based Radiology and Imaging Services (X-ray, Ultrasound): * Copayment waived if provider is a preferred center.	\$25 Copayment
Outpatient Hospital or Office Based Advanced Imaging Services (MRI, CT Scan, PET Scan):	\$125 Copayment

## Behavioral Health Services

Mental Health/Substance Use Inpatient Services	Covered in full
Mental Health/Substance Use Office-Based Services (Including Telemedicine Providers (Valera, aptihealth))	\$25 Copayment

\*(Up to 20 visits per plan year may be used for substance use family counseling.)

## Outpatient Rehabilitation Services

Physical Therapy (30 visits per benefit period)	\$25 Copayment
---	----------------



# CDPHP<sup>®</sup> HMO Plan Benefit Summary



Plan Code: HA14L25(Pending DFS Approval)  
 Group ID: 10006864  
 Presented For: County of Rensselaer  
 Date Prepared: 10/11/2024  
 Effective Date: 01/01/2025

	In-Network
Speech Therapy (20 visits per benefit period)	\$25 Copayment
Occupational Therapy (30 visits per benefit period)	\$25 Copayment
<b>Condition Support Services</b>	
Home Health Care	Covered in full
Skilled Nursing Facility	Covered in full (45 days per plan year)
Chemotherapy/Radiation Therapy visit	\$25 Copayment
Prosthetic Devices and Durable Medical Equipment	50% Coinsurance
<b>Diabetic Services</b>	
Insulin	Covered in full
Oral Medications	\$25 Copayment
Needles and Syringes	\$25 Copayment
Diabetic DME (Insulin Pumps/Omni Pods, Glucose Monitors)	\$25 Copayment
<b>Vision Services</b>	
Laser Eye Surgery	Up to a maximum of \$750 reimbursement for eligible eye surgeries and consultations per lifetime
<b>Wellness Care</b>	
Weight Management	Up to a \$100 reimbursement available for participation in a weight loss program
Fitness Reimbursement	Subscribers can be reimbursed up to \$400 per plan year for qualified fitness activities. Of the \$400, up to \$200 can be applied for reimbursement of wearable fitness devices. Covered dependents can be reimbursed up to a combined \$200 for qualified fitness activities and youth sports fees for members under age 18. Of the \$200, up to \$100 can be applied for reimbursement of wearable fitness devices.
Child Birthing Classes	Up to \$75 reimbursement available for completion of child birthing class
Doula Reimbursement (A doula is a trained companion who supports another person through pregnancy and childbirth)	\$1,500
Life Points Rewards	Participating (Up to \$180 Life Points per contract per calendar year)
Acupuncture (10 visit limit per plan year for acupuncture services)	\$25 Copayment
Nutritional Counseling	\$25 Copayment
Chiropractic Benefits	\$25 Copayment

*This Summary of Benefits is intended to provide a general outline of coverage. In the event of any conflict between this document and the member's Certificate and any applicable Rider(s) issued by CDPHP, the Certificate and Rider(s) will be the controlling documents.*

*CDPHP gives you access to more than 12,000 participating practitioners and providers, including most of the local hospitals, and a variety of value-added services to help you and your family stay healthy. If you have a question or wish to receive additional information, please contact the CDPHP marketing department at (518) 641-5000 or 1-800-993-7299 or visit our Web site at [www.cdphp.com](http://www.cdphp.com).*

*All in-network Preauthorization requests are the responsibility of Your Participating Provider. You will not be penalized for a Participating Provider's failure to obtain a required Preauthorization. However, if services are not Covered under the Certificate, You will be responsible for the full cost of the services.*

*Some plans may have reduced cost-share for office-based mental health and substance use disorder services to ensure the plan meets federal behavioral health parity regulations. Please refer to the Mental Health/Substance Use Office-Based Services section of the summary and your member materials for correct cost-share information.*

# CDPHP® HMO Plan Benefit Summary



Plan Code: HA14L25(Pending DFS Approval)  
 Group ID: 10006864  
 Presented For: County of Rensselaer  
 Date Prepared: 10/11/2024  
 Effective Date: 01/01/2025

Your employer has chosen the following rider(s) to modify the Plan under which you would be covered as a CDPHP Member.

Medicare Split Family Rider	
Rider Name	ELGMC
Description	Medicare Split Family Rider
Pharmacy Coverage	
Rider Name	HMRXL7A25
Description	Preferred Retail Prescription Drugs (30 Day Supply)
	Tier 1 Drugs*                 \$10
	Tier 2 Drugs                 \$25
	Tier 3 Drugs                 \$40
	Non-Preferred Retail Pharmacy (30 Day Supply)
	Tier 1 Drugs                 50%
	Tier 2 Drugs                 50%
	Tier 3 Drugs                 50%
	Specialty Drugs                 \$40
	*Copay/Coinsurance waived for members under age 19 Mail order, 2.0 Preferred Tier Copayments for a 90-day supply. Prescription drugs are not subject to the plan deductible. Preventive prescription drugs are not subject to the plan deductible. Prescriptions must be written by a duly licensed health care provider and filled at a participating pharmacy, unless otherwise authorized in advance by CDPHP. Specialty drugs are not eligible for the mail order program.
Surviving Spouse	
Rider Name	ELG17
Description	Extends eligibility for surviving spouse and dependents upon the death of the subscriber.
Vision Coverage	
Rider Name	VSN2
Description	One routine eye exam is available every 24 months, commencing on the group effective date, without referral, refer to specialist office visit for cost share.

# Dependable Rx coverage

Prescription medications can have a big impact on your health and your wallet. That's why it's important to know how your prescription drug coverage works. CDPHP takes an innovative approach to pharmacy coverage, helping you find the lowest cost medication at the location offering the best price.

Log in to [member.cdphp.com](https://member.cdphp.com) to view all pharmacy benefit coverage details.



## Search for Medication Savings

Download the **CDPHP ConnectRx, On the Go** app to view your medications, search for cost saving alternatives, change your pharmacy, and more. Text RX to **237471**, or scan the QR code to get started today.



## Preferred Pharmacy Network

Preferred Pharmacy Network Members have access to the CDPHP Preferred Rx Network, which allows you to fill prescriptions for a lower cost at many chain store pharmacies and independents. Learn more at [cdphp.com/PreferredRx](https://cdphp.com/PreferredRx).



## Prescription Discount Program\*

With **Rx for Less**, get many generic drugs for as little as a dollar a fill at preferred pharmacies. Visit [cdphp.com/less](https://cdphp.com/less) for the list of pharmacies and drugs that are part of the program.



## Prescription Mail Order\*\*

Get medications you take on a regular basis delivered to your home at no extra cost from Optum Home Delivery.

Check your member ID card to find out which formulary (list of covered drugs) is available with your plan. The tier assigned to a drug determines how much you'll pay for it. Excluded drugs are covered only by medical exception, which your doctor can apply for.

For more information, visit [cdphp.com/RxCorner](https://cdphp.com/RxCorner).

\* Rx for Less does not apply to mail order service.  
\*\* Specialty pharmacy agents, including injectables and certain drugs used to treat hepatitis C, HIV, multiple sclerosis, and other serious conditions, are not eligible for this program. Get more information about specialty drugs at <https://www.cdphp.com/members/rx-corner/specialty-drugs>. Some of the pharmacy benefits listed may not apply for members who do not have Rx coverage. Check your member contract for details.



# The CDPHP® Preferred Rx Network

Members have access to our CDPHP Preferred Rx Network\* where you can choose from thousands of preferred network pharmacy locations. These pharmacies have teamed up with CDPHP to keep prescription drug costs affordable.

Drugs dispensed at pharmacies that have chosen not to join the CDPHP Preferred Rx Network will take a 50 percent coinsurance.\*\* While those pharmacies remain in our network, they have not yet agreed to participate in the CDPHP Preferred Rx Network.

## CDPHP Preferred Rx Network pharmacies include but are not limited to:

- ▶ ConnectRx
- ▶ Market 32/Price Chopper
- ▶ Walmart
- ▶ Hannaford
- ▶ ShopRite
- ▶ Walgreens
- ▶ Kinney Drugs
- ▶ RiteAid
- ▶ Stop & Shop
- ▶ Giant Foods
- ▶ Food Lion
- ▶ Multiple independent pharmacies

Currently, all CDPHP Preferred Rx Network locations participate in the Rx for Less program (which offers dozens of medications for as low as a penny a pill), further staving off skyrocketing health care costs.

## To switch your pharmacy

Simply call the pharmacy you would like to switch to and let them know you are transferring your prescription there.

Or feel free to bring your prescription bottle to your preferred pharmacy and ask for the prescription to be transferred.

You can check individual pharmacy pricing in real time with the **CDPHP ConnectRx, On the Go app**. Simply download on the App Store or Google Play to view your medication history, compare pricing, locate preferred pharmacies, and more.



\* Members in high deductible health plans (HDHP) are required to meet their deductible in full before any cost sharing benefits would apply. If/when the deductible is met, HDHP members will experience a difference in cost share based on preferred/non-preferred Rx network status. Drugs on the CDPHP Preventive Drug List bypass the deductible.

\*\* The non-preferred pharmacy coinsurance does not apply to NYSOH standard plans, Healthy NY, Child Health Plus, Essential Plan, Group Medicare, NYSHIP, FEHB plans, some self-funded groups, or groups that have a medical plan with Rx covered in full.



# A Pharmacy Experience Designed Around You

ConnectRx offers free home delivery and cost-saving drug programs, along with dedicated support from expert pharmacists. We're here for you throughout the Capital Region.

## ConnectRx Hometown

601 19th Street  
Watervliet, NY 12189  
(518) 273-1402

## ConnectRx Latham

6 Wellness Way  
Suite 104  
Latham, NY 12110  
(518) 313-1016

Visit [PharmacyConnectRx.com](https://www.PharmacyConnectRx.com) to learn more. ConnectRx locations accept most major insurance plans.

Call today to quickly and easily transfer your prescriptions!



### MANAGE YOUR PRESCRIPTIONS ON THE GO!

CDPHP® members: Scan the QR code with your smartphone camera to download the **CDPHP ConnectRx, On the Go** app to view your prescriptions, compare drug costs, and much more!



# Rx for Less

## Medications for as Low as a Dollar a Fill

With Rx for Less, CDPHP® members with prescription drug benefits can get deep discounts on specified generic drugs when purchased at preferred pharmacies, including:

- ▶ ConnectRx
- ▶ Hannaford
- ▶ Market 32/  
Price Chopper
- ▶ Rite Aid
- ▶ ShopRite
- ▶ Walgreens
- ▶ Walmart
- ▶ Kinney Drugs
- ▶ Food Lion
- ▶ Giant Food
- ▶ Stop & Shop
- ▶ Multiple independent  
pharmacies

For more details, go to [cdphp.com/save](https://cdphp.com/save). If you're a CDPHP Medicare Advantage member, you can view your Rx for Less drug list online at that page.

Drug Label Name	Quantity Example	Rx For Less Price
<b>ANTI-INFLAMMATORY</b>		
DICLOFENAC SOD 50MG EC, 75MG EC TAB	90	\$5.00
IBUPROFEN 400 MG, 600 MG, 800 MG TAB	90	\$5.00
INDOMETHACIN 25 MG CAP	90	\$5.00
MELOXICAM 7.5 MG, 15 MG TAB	90	\$1.00
NAPROXEN 375 MG, 500 MG TAB	90	\$5.00
<b>ASTHMA</b>		
ALBUTEROL NEB 0.083%	150	\$5.00
IPRATROPIUM NEB 0.2 MG/ML	150	\$5.00
MONTELUKAST 10MG TAB	90	\$1.00
<b>BEHAVIORAL HEALTH</b>		
BUSPIRONE 5 MG, 10 MG TAB	90	\$1.00
CITALOPRAM 20 MG, 40 MG TAB	90	\$1.00
ESCITALOPRAM 10MG, 20MG TAB	90	\$1.00
FLUOXETINE 10 MG, 20MG CAP	90	\$1.00
NORTRIPTYLINE 10 MG, 25 MG CAP	90	\$3.00
PAROXETINE 10 MG, 20MG TAB	90	\$1.00
QUETIAPINE 50 MG, 100 MG TAB	90	\$5.00
QUETIAPINE 200 MG, 300 MG TAB	90	\$9.00
RISPERIDONE 0.25 MG, 0.5 MG, 1 MG, 2 MG TAB	90	\$1.00
SERTRALINE 25 MG, 50 MG, 100 MG TAB	90	\$1.00
TRAZODONE 50 MG, 100 MG, 150 MG TAB	90	\$3.00
VENLAFAXINE ER 37.5 MG, 75 MG CAP	90	\$3.00
VENLAFAXINE ER 150 MG CAP	90	\$5.00
<b>BLOOD THINNER</b>		
WARFARIN/JANTOVEN 1 MG - 10 MG TAB	90	\$3.00
<b>CARDIAC/BLOOD PRESSURE</b>		
<b>ACE INHIBITORS</b>		
BENAZEPRIL HCL 5 MG, 10 MG, 20 MG, 40 MG TAB	90	\$3.00
ENALAPRIL MALEATE 2.5 MG, 5 MG, 10 MG, 20 MG TAB	90	\$5.00
LISINAPRIL 2.5 MG, 5 MG, 10 MG, 20 MG, 30 MG, 40 MG TAB	90	\$1.00
LISINAPRIL-HCTZ 10-12.5 MG, 20-12.5 MG, 20-25 MG TAB	90	\$1.00
RAMIPRIL 1.25 MG, 2.5 MG, 5 MG, 10 MG CAP	90	\$5.00
<b>ANGIOTENSIN II RECEPTOR BLOCKERS (ARBs)</b>		
LOSARTAN POTASSIUM 25 MG, 50 MG, 100 MG TAB	90	\$1.00

**MORE DRUGS ON THE NEXT PAGE** ➡

Drug Label Name	Quantity Example	Rx For Less Price
<b>BETA-BLOCKERS</b>		
ATENOLOL 25 MG, 50 MG , 100 MG TAB	90	\$1.00
CARVEDILOL 3.125 MG, 6.25 MG, 12.5 MG, 25 MG TAB	90	\$1.00
METOPROLOL ER SUC 25 MG, 50 MG, 100 MG TAB	90	\$5.00
METOPROLOL TARTRATE 25 MG, 50 MG, 100 MG TAB	90	\$1.00
PROPRANOLOL 10 MG, 20 MG TAB	90	\$1.00
<b>CALCIUM CHANNEL BLOCKERS</b>		
AMLODIPINE 2.5 MG, 5 MG, 10 MG TAB	90	\$1.00
<b>DIURETICS</b>		
FUROSEMIDE 20 MG, 40 MG, 80 MG TAB	90	\$1.00
HYDROCHLOROTHIAZIDE 12.5 MG CAP	90	\$1.00
HYDROCHLOROTHIAZIDE 25 MG, 50 MG TAB	90	\$1.00
TRIAMTERENE-HCTZ 37.5-25 MG CAP	90	\$5.00
TRIAMTERENE-HCTZ 37.5-25 MG, 75-50 MG TAB	90	\$5.00
<b>OTHER — CARDIAC</b>		
CLONIDINE 0.1 MG, 0.2 MG, 0.3 MG HCL TAB	90	\$1.00
<b>CHOLESTEROL (STATINS)</b>		
ATORVASTATIN 10 MG, 20 MG, 40 MG, 80 MG TAB	90	\$5.00
LOVASTATIN 10 MG, 20 MG TAB	90	\$1.00
LOVASTATIN 40 MG TAB	90	\$5.00
PRAVASTATIN SODIUM 10 MG, 20 MG, 40 MG TAB	90	\$5.00
ROSUVASTATIN 5 MG, 10 MG, 20 MG, 40 MG TAB	90	\$5.00
SIMVASTATIN 10 MG, 20 MG, 40 MG, 80 MG TAB	90	\$1.00
<b>DIABETES</b>		
GLIMEPIRIDE 1 MG, 2 MG, 4 MG TAB	90	\$1.00
GLIPIZIDE 5 MG, 10 MG TAB	90	\$1.00
GLIPIZIDE XL 2.5 MG, 5 MG, 10 MG TAB	90	\$9.00
METFORMIN HCL 500 MG, 850 MG, 1,000 MG TAB	90	\$1.00
METFORMIN HCL ER 500 MG, 750 MG TAB	90	\$1.00
<b>GOUT</b>		
ALLOPURINOL 100 MG, 300 MG TAB	90	\$3.00
<b>OSTEOPOROSIS</b>		
ALENDRONATE SODIUM 35 MG, 70 MG TAB *	12	\$3.00
<b>STEROIDS</b>		
PREDNISONE 5 MG, 10 MG TAB	90	\$1.00
<b>VITAMINS/SUPPLEMENTS</b>		
FOLIC ACID 1 MG TAB	90	\$1.00

Rx for Less pricing is not applicable to mail-order drugs. Please note that pharmacies, drugs, and prices are subject to change at any time.

\* Dosing schedule for Alendronate is 1 tab per week. Price shown is for 12 tabs (90-day supply).





# Let us bring your medications to you

With Optum® Home Delivery, you can get a 3-month supply of your long-term medications. Plus, we mail them to you with free standard shipping.

## Want more reasons?



### Skip the trips

We deliver your medication to your door. You don't even have to leave home or wait in the pharmacy line.



### Save money

You may pay less than what you do at in-store pharmacies. And, standard shipping is free.



### Stay on track

With a 3-month supply, you may be less likely to miss a dose. You can even sign up for automatic refills.

## Flexible payment options

Make one payment upfront. Or split it up into 3 equal monthly payments.

## We're here when you need us

Go to [pharmacy.optum.com](https://pharmacy.optum.com) any time to track orders, request refills, price medications and more. Pharmacists and customer support team are available 24/7.

---

**Ready for home delivery?**  
Sign up today.

Get started with Optum Home Delivery by calling the prescription number on your member ID card.



## Frequently Asked Questions

### Is the Optum Home Delivery pharmacy in my plan's network?

Yes, it's part of your plan's pharmacy network.

### Once I've enrolled in home delivery, how long will it take to get my medication(s)?

Medications should arrive within 5 business days after we receive the complete order.

### What is a long-term medication?

Long-term medications are those you take on a regular basis. These may be taken for high blood pressure, cholesterol, and depression, just to name a few.

### Can I use home delivery for any medication?

Use home delivery for your regular medications. See which of your prescriptions can be filled through home delivery by going online.

### Can I set up medication reminders?

Yes. Go online to check your profile and turn on email and phone notifications and reminders.

### How does the automatic refill program work?

Go online to see and enroll all eligible medications. Then, we'll send your refills when it's time. We notify you before we ship and we'll use your approved payment method on file. It's that easy.



### Manage your home delivery medications online

Visit [pharmacy.optum.com](https://pharmacy.optum.com) and go to the Optum Home Delivery Pharmacy section to create an account and log in.



Optum is a registered trademark of Optum, Inc. in the U.S. and other jurisdictions. All other brand or product names are the property of their respective owners. Because we are continuously improving our products and services, Optum reserves the right to change specifications without prior notice. Optum is an equal opportunity employer.

© 2023 Optum, Inc. All rights reserved. WF11831676

# CDPHP® Health Resources



## Helping Members Get and Stay Healthy

### The CDPHP Health Hub

Explore customized well-being resources and nutritional guidance to help you make healthy choices each day. Earn CDPHP Life Points® Rewards that can be redeemed for gift cards.\* Sign up by downloading the Virgin Pulse app or visiting [join.virginpulse.com](https://join.virginpulse.com).



### The CDPHP Care Team

Talk one-on-one with a nurse, registered dietitian, or pharmacist to get more information on a variety of health issues, ask questions about medications, receive help monitoring your health, and more. Call [1-888-942-3747](tel:1-888-942-3747) to chat with the team between 9 a.m. and 5 p.m. Monday through Friday.

### Doctor On Demand®

Live video doctor visits 24/7 for physical and mental health from your smartphone, tablet, or computer. Visit [doctorondemand.com/cdphp/join](https://doctorondemand.com/cdphp/join) to register for your free account.



### Mental Health Support

Receive personal assistance for mental health concerns by calling [1-888-320-9584](tel:1-888-320-9584) between 8 a.m. and 6 p.m. Monday through Friday. For urgent help after hours, call the crisis hotline at [1-855-293-0785](tel:1-855-293-0785). Visit [cdphp.com/help](https://cdphp.com/help) for more information.



### Kick The Smoking Habit

Quit smoking or vaping with digital, phone-based, group, or one-on-one programs. Visit [cdphp.com/quitsmoking](https://cdphp.com/quitsmoking) for details.



### Reproductive, Family Support, and Women's Health

From cycle tracking and trying to conceive, to pregnancy and parenthood, Ovia Health™ has multiple programs to fit your family planning needs. Plus, get education, support, and guidance to better understand and effectively manage menopause with confidence. Visit [cdphp.com/familyhealth](https://cdphp.com/familyhealth) for more details.



### Prevent Diabetes

Lose weight and prevent diabetes with VP Transform for Prediabetes. This leading CDC-recognized diabetes prevention program combines live health coaching with a smartphone app, so staying on track with your health is easy. See if you qualify for the program by visiting [join.virginpulse.com](https://join.virginpulse.com).



For more health resources, visit [cdphp.com/wellness](https://cdphp.com/wellness)

\* Life Points Rewards are available on most employer group plans.

## Helping Members Save Money

### Fitness Reimbursement

Eligible members can be reimbursed up to \$600 per plan year (\$400 for subscriber, \$200 combined for covered dependents) for going to the gym, youth sports fees, parent and baby classes, fitness classes, digital fitness classes, and wearables fitness devices. Please note there is a cap on how much of your reimbursement amount can be used for qualified devices. Subscribers can be reimbursed up to \$200 for qualified devices (out of the \$400 maximum) and covered dependents can be reimbursed up to a combined \$100 for qualified devices (out of the \$200 maximum). For details, visit [cdphp.com/FitnessReimbursement](https://cdphp.com/FitnessReimbursement).



### Weight Management Reimbursement

Eligible members can be reimbursed up to \$100 for participating in a qualifying weight management program. To learn more, visit [cdphp.com/weight-management](https://cdphp.com/weight-management).



### MyFitRx™ Reimbursement

Eligible members can be reimbursed up to \$50 per benefit year for completing MyFitRx (for ages 16+) at CDPHP Fitness Connect at the Ciccotti Center. Visit [cdphp.com/fitness](https://cdphp.com/fitness).



### Parenting Preparation Reimbursement

Eligible members can be reimbursed up to \$75 for in-person or digital parenting preparation education classes such as childbirth, newborn care, or child and baby CPR. To learn more, visit [cdphp.com/pregnancy](https://cdphp.com/pregnancy).



### Doula Reimbursement

Eligible members can be reimbursed up to \$1,500 for in-person or digital services provided by a certified and/or trained doula. To learn more, visit [cdphp.com/pregnancy](https://cdphp.com/pregnancy).



## In Your Community

### Free CDPHP Wellness Classes

Access to community wellness programs and online classes you can take from home. To learn more, go to [cdphp.com/classes](https://cdphp.com/classes).



### CDPHP Customer Connect<sup>SM</sup>

Ask questions about your claims and benefits, request ID cards, enroll in a health plan, and more. Visit [cdphp.com/CustomerConnect](https://cdphp.com/CustomerConnect) for locations and more.



*Please check your policy for specific wellness benefit eligibility information.*

### Discrimination is Against the Law

Capital District Physicians' Health Plan, Inc., CDPHP Universal Benefits, Inc., and Capital District Physicians' Healthcare Network, Inc. (collectively referred to as CDPHP<sup>®</sup>) comply with applicable federal civil rights laws and do not discriminate on the basis of race, color, national origin, age, disability, or sex.

### Multi-language Interpreter Services

ATENCIÓN: Si habla otro idioma que no es el inglés, tiene a su disposición servicios gratuitos de asistencia lingüística. Llame al número que figura en su tarjeta de identificación de miembro (TTY: 711).

注意：如果您使用的語言不是英語，您可以免費獲得語言援助服務。請致電您會員ID卡上的電話（聽力障礙電傳：711）。



# Small steps lead to big changes.

Get started on your path to better health by visiting the CDPHP® Health Hub.

We'll help you make small, everyday changes focused on the areas you want to improve the most. With daily engagement, you'll build healthy habits and experience the lifelong rewards of better health.

The CDPHP Health Hub can be accessed from your smartphone or computer, giving you 24/7 access to powerful wellness resources right at your fingertips.

The CDPHP Health Hub can help you:

- ▶ Learn how to eat for energy, move more, sleep better, manage stress, and more
- ▶ Motivate others and be motivated to build new healthy habits
- ▶ Reach your health goals

Reap the rewards of better health

As you complete health-related activities, you'll move through levels and earn points. When you reach milestone levels, you unlock CDPHP Life Points® Rewards. Redeem the rewards for gift cards and merchandise.



Health Hub

*All adults age 18 and older in select plans are eligible. CDPHP Life Points Rewards accumulate per calendar year, per contract. Rewards must be redeemed by December 31 each year or prior to contract termination. Please check your member contract or call the number on your ID card to see if you're eligible.*

# Get started

Follow these easy steps for mobile or desktop:

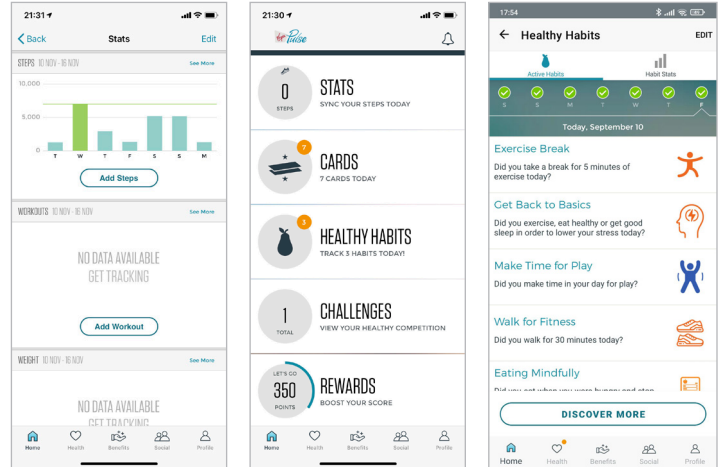
**STEP 1** Search for the **Virgin Pulse app** in either the App Store or Google Play and add it to your device or visit [join.virginpulse.com](http://join.virginpulse.com).

**STEP 2** Enter CDPHP Fully Insured as your sponsor.

**STEP 3** Enter your full name as it appears on your CDPHP ID card, date of birth, and member ID. Your member ID is located on your ID card. Your member ID is nine characters, plus the two-digit number in front of your name.

**STEP 4** Create your username and password.

**STEP 5** Set your interests to get personalized daily tips to help you eat healthy, get active, reduce stress, sleep well, and more!



## TIP!

Turn on your mobile alerts so you don't miss out on fun opportunities. Go to your phone's Settings and find Virgin Pulse in your installed apps. Go to Notifications > Allow/Show Notifications.



## Health Hub

### Discrimination is Against the Law

Capital District Physicians' Health Plan, Inc., CDPHP Universal Benefits, Inc., and Capital District Physicians' Healthcare Network, Inc. (collectively referred to as CDPHP®) comply with applicable federal civil rights laws and do not discriminate on the basis of race, color, national origin, age, disability, or sex.

### Multi-language Interpreter Services

ATENCIÓN: Si habla otro idioma que no es el inglés, tiene a su disposición servicios gratuitos de asistencia lingüística. Llame al número que figura en su tarjeta de identificación de miembro (TTY: 711).

注意：如果您使用的語言不是英語，您可以免費獲得語言援助服務。請致電您會員ID卡上的電話（聽力障礙電傳：711）。



# Money back for working out

It pays to exercise with the CDPHP® fitness reimbursement

- ▶ Subscribers can be reimbursed up to \$400 per plan year and their dependents can be reimbursed up to a combined \$200 – a total of up to \$600 per contract.\*
- ▶ Gyms, specialty fitness studios, and paid digital fitness classes qualify for reimbursement.\*\*
- ▶ Parent and baby classes such as parent and baby yoga, swim lessons, etc. also qualify.
- ▶ Youth sports fees for members under age 18 can be reimbursed under the dependent portion.
- ▶ A portion of the reimbursement can be used for wearable fitness devices.\*\*\*

Learn more by visiting [cdphp.com/fitnessreimbursement](https://cdphp.com/fitnessreimbursement).



*\* This benefit does not apply to all plans. Login at [member.cdphp.com](https://member.cdphp.com) to check your plan contract or call member services at the number on your ID card to confirm eligibility.*

*\*\* Fitness equipment does not qualify for reimbursement.*

*\*\*\* Subscribers can be reimbursed up to \$200 for qualified devices (out of the \$400 maximum) and covered dependents can be reimbursed up to a combined \$100 for qualified devices (out of the \$200 maximum).*

## **Discrimination is Against the Law**

Capital District Physicians' Health Plan, Inc., CDPHP Universal Benefits, Inc., and Capital District Physicians' Healthcare Network, Inc. (collectively referred to as CDPHP®) comply with applicable federal civil rights laws and do not discriminate on the basis of race, color, national origin, age, disability, or sex.

## **Multi-language Interpreter Services**

ATENCIÓN: Si habla otro idioma que no es el inglés, tiene a su disposición servicios gratuitos de asistencia lingüística. Llame al número que figura en su tarjeta de identificación de miembro (TTY: 711).

注意：如果您使用的語言不是英語，您可以免費獲得語言援助服務。請致電您會員ID卡上的電話（聽力障礙電傳：711）。

Capital District Physicians' Health Plan, Inc. | CDPHP Universal Benefits,® Inc. | Capital District Physicians' Healthcare Network, Inc. 24-27995



# Mental Health and Substance Use

## Here for you, when you need us most.

It can be tough to ask for help, and you may not know where to turn. If you're ready to take the first step, CDPHP® is here for you and your family. Our Behavioral Health Access Center is made up of a team of mental health care experts who understand what you're going through and can point you in the right direction.

Give us a call at **1-888-320-9584** between 8 a.m. and 6 p.m., Monday through Friday. If you need help afterhours, or if this is an emergency, press "1" to be connected with our crisis line.

### LOCAL, IN-PERSON CARE

CDPHP partners with the area's best psychologists, psychiatrists, social workers, therapists, clinics, and facilities for all of your mental health and substance use disorder needs. If you're ready to meet with a local professional, visit **findadoc.cdphp.com** to locate a provider near you. If you need help selecting a provider that's right for you, just give us a call at **1-888-320-9584**.

### VIRTUAL MENTAL HEALTH CARE

Technology makes it easier than ever to receive mental health services from the comfort of your home. CDPHP partners with some of the nation's best virtual mental health care providers, who offer counseling and medications (if needed).

	<b>aptihealth</b> aptihealth.com/CDPHP	<b>Doctor On Demand®</b> cdphp.com/doctorondemand	<b>Valera</b> cdphp.com/valera
<b>Age Treated and Location</b>	Adults, adolescents, and children 5+ years of age who live in New York state	Adults, adolescents, and children of all ages who live in the United States	Adults, adolescents, and children 12+ years of age who live in New York and other participating states
<b>Specialty</b>	Mild symptoms to severe, perinatal and postpartum depression, persistent mental illness	Mild symptoms to severe, perinatal and postpartum depression, relationships, trauma, and loss	Mild symptoms to severe, perinatal and postpartum depression, culturally-competent care, including LGBTQ services
<b>Care within</b>	Five days to three weeks of clinical consultation	48 hours	Seven days to three weeks of initial consultation
<b>Language</b>	Translation services available	Translation services available	12+ languages, American Sign Language (ASL)

**24/7 CRISIS HOTLINE:** If you have an emergency, please contact **1-888-320-9584**. For help afterhours, press "1" to be connected with our crisis hotline. Or, text **988** to reach the NYS Crisis Lifeline.

#### Discrimination is Against the Law

Capital District Physicians' Health Plan, Inc., CDPHP Universal Benefits, Inc., and Capital District Physicians' Healthcare Network, Inc. (collectively referred to as CDPHP®) comply with applicable federal civil rights laws and do not discriminate on the basis of race, color, national origin, age, disability, or sex. CDPHP does not exclude people or treat them differently because of race, color, national origin, age, disability, or sex.

#### Multi-language Interpreter Services

ATENCIÓN: Si habla otro idioma que no es el inglés, tiene a su disposición servicios gratuitos de asistencia lingüística. Llame al número que figura en su tarjeta de identificación de miembro (TTY: 711).

注意：如果您使用的語言不是英語，您可以免費獲得語言援助服務。請致電您會員ID卡上的電話（聽力障礙電傳：711）。



# Logging into Your Account

By setting up a member account, you can easily access health resources from the comfort of your home computer, laptop, or mobile device.

Not registered yet? It's easy. Navigate to [member.cdphp.com](https://member.cdphp.com) and click the **Register** link to create an account. You will need your member ID number (from your ID card) and a few other pieces of identifying information.

Here is an overview of resources available to you once you've logged in:

Self-Serve Options	Name or change your PCP (for applicable plans), complete the Release of Information (ROI) form, and submit reimbursement for medical claims paid out of pocket.
CDPHP® Price Check™	Get an estimated cost on a range of health care services before you choose a provider. This tool gives you more control of your health care dollars by allowing you to compare prices and plan for expenses in advance.
Benefits Information	A breakdown of your medical, prescription, and dental plans, as well as your funding account details (if any).
Claims Center	Use this tool to check the status of medical, dental, and prescription claims for you and your dependents under the age of 18.
Deductible Accumulator and Limit Information	Know how much of your deductible has been satisfied and the benefit limits for various services.
Dental Benefits	View your dental benefits and claims activity, find a dentist, and more.
Drug Coverage and Pricing	View your prescription drug plan and benefits, find in-network pharmacies, and more.
Healthy Activities and Challenges	Earn CDPHP Life Points® Rewards by taking steps to better your health.*
Funding Accounts (if applicable)	Access your HRA, FSA, and/or HSA account details, including your contributions and balance. You can also track spending, view and submit claims, and substantiate debit card transactions.
Contact Us	This tool comes in handy when you need to communicate securely via email with CDPHP regarding a benefit or claims inquiry.
Member ID Cards	Misplaced your ID card? No problem! Click this option to view and print your ID card and order a new one for yourself and your covered family members. You can also download the My CDPHP app on your smartphone to have your ID card handy at all times.
My Account	This page lists the personal information CDPHP has on file for you, including your name, address, date of birth, phone number, and more. Use the Edit function to make updates.
Helpful Videos	View tutorials on staying healthy, finding care, and understanding health insurance, and more by logging into your member account, clicking the <b>Health &amp; Wellness</b> tab, and selecting <b>Helpful Videos</b> .

Need help getting started? Call a CDPHP member services representative at the number on your ID card.

\* Life Points Rewards available on most group plans.



Lined writing area with horizontal dashed lines.

A series of horizontal dotted lines for writing.

A series of horizontal dotted lines for writing.

### Connect with us!

Tell us what you think at  
[insights.cdphp.com/join](https://insights.cdphp.com/join) 

Get fitness tips, wellness ideas,  
and more! Follow us on social  
and visit [blog.cdphp.com](https://blog.cdphp.com).



**A plan for life.**

Capital District Physicians' Health Plan, Inc.  
CDPHP Universal Benefits,® Inc.

(518) 641-5000 or 1-800-993-7299  
[www.cdphp.com](https://www.cdphp.com)